

**ROOF KIT FOR THE
POLARIS RZR 1000 XP STANDARD**

81-20107

SEIZMIK[®]

HIGHLIFTER

SEIZMIK[™]



 service@seizmik.com

 1-866-838-3366
between 9:00 AM and 5:00 PM EST.



www.seizmik.com/customer-support

Parts Available For These Popular Brands and Others

POLARIS

can-am



HONDA

Kawasaki

 **YAMAHA**

BEFORE YOU BEGIN

READ THESE INSTRUCTIONS AND CHECK THAT ALL PARTS ARE ACCOUNTED FOR. PLEASE RETAIN THESE INSTRUCTIONS FOR FUTURE REFERENCE.

PARTS

PANEL ROOF
M6 THREADED CLIP
M6 X1.0 X25 SCREW

QTY 1
QTY 2
QTY 2



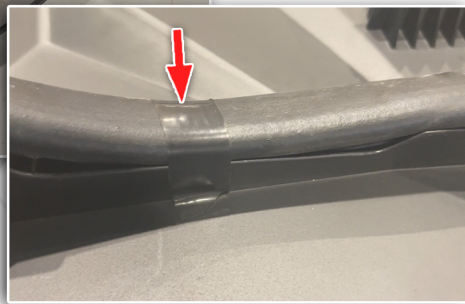
NOTE: INSTALLATION IS EASIER IF THE VEHICLE IS CLEAN AND FREE OF DEBRIS. ENSURE THE VEHICLE IS TURNED OFF AND IN PARK BEFORE INSTALLATION.

STEP 1 ROOF ASSEMBLY

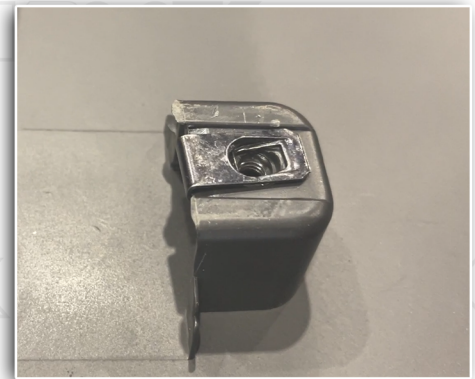
RECOMMENDED: YOU MAY ADD WEATHER STRIPPING OR SILICONE TO THE UNDERSIDE OF THE ROOF BEFORE ASSEMBLY.



TIP: YOU CAN USE TAPE TO HELP SECURE THE WEATHER STRIPPING FOR THE INSTALL.



INSTALL THE TWO M6 THREADED CLIPS TO THE TWO STANDOFFS ON THE UNDERSIDE OF THE ROOF.



STEP 2 ROOF INSTALLATION

SET THE ROOF IN PLACE ON THE FRAME AT THIS TIME.

LOWER AND THEN SLIDE THE TWO FRONT HOOKS INTO THE SLOTS ON THE FRAME. PRESS THE REAR OF THE ROOF DOWN UNTIL THE THREE HOOKS LOCK OVER THE REAR CROSS - MEMBER OF THE FRAME. SECURE THE REAR CORNERS USING THE TWO M6 SCREWS.

