

ROOF KIT FOR THE POLARIS RZR 1000 XP CREW

81-20108

SEIZMIK[®]

HIGHLIFTER

SEIZMIK[™]

FALCON RIDGE

**SNORKEL
YOUR ATV**

SYSTEM 3[™]
OFF-ROAD
Traction. Strength. Style.

EPI[™]
PERFORMANCE

 service@seizmik.com

 1-866-838-3366
between 9:00 AM and 5:00 PM EST.



www.seizmik.com/customer-support

Parts Available For These Popular Brands and Others

POLARIS

can-am



HONDA

Kawasaki

 **YAMAHA**

BEFORE YOU BEGIN

READ THESE INSTRUCTIONS AND CHECK THAT ALL PARTS ARE ACCOUNTED FOR. PLEASE RETAIN THESE INSTRUCTIONS FOR FUTURE REFERENCE.

PARTS

PANEL ROOF FRONT
FRONT TO REAR PANEL SEAL
PANEL ROOF REAR
14X3/4 SCREW
M6 THREADED CLIPS
ROOF CLAMP
M6X25 SCREW

QTY 1
QTY 1
QTY 1
QTY 8
QTY 5
QTY 2
QTY 5

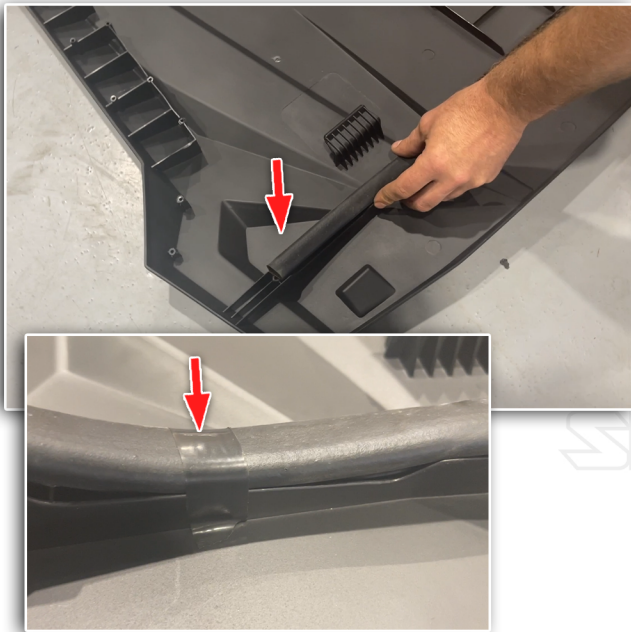


NOTE: INSTALLATION IS EASIER IF THE VEHICLE IS CLEAN AND FREE OF DEBRIS. ENSURE THE VEHICLE IS TURNED OFF AND IN PARK BEFORE INSTALLATION.

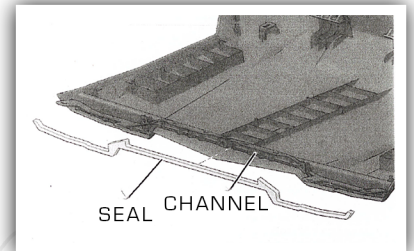
STEP 1 ROOF ASSEMBLY

LAY BOTH ROOF PANELS FACE DOWN ON A PROTECTIVE SURFACE

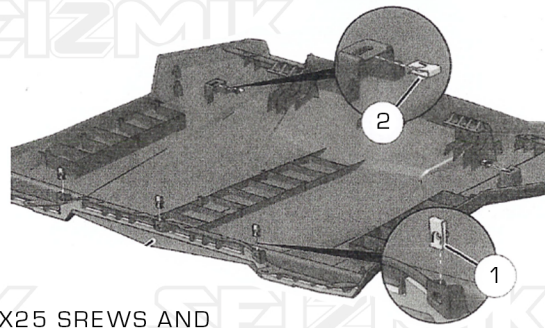
RECOMMENDED: YOU MAY ADD WEATHER STRIPPING OR SILICONE TO THE UNDERSIDE OF THE ROOF BEFORE ASSEMBLY.



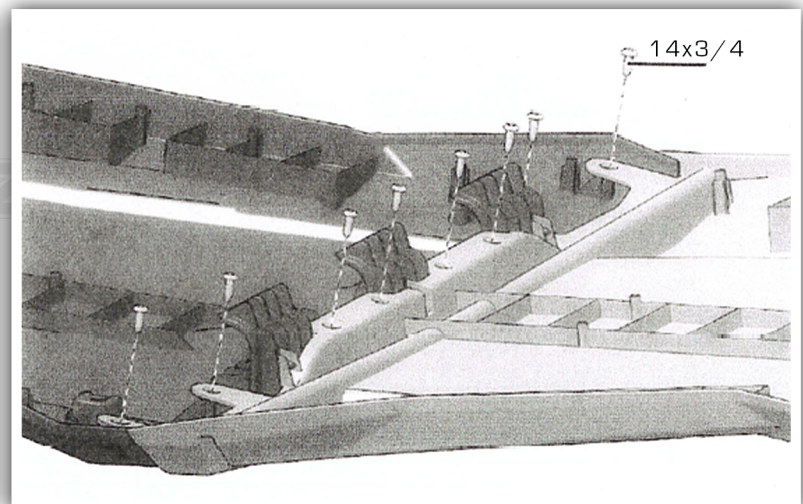
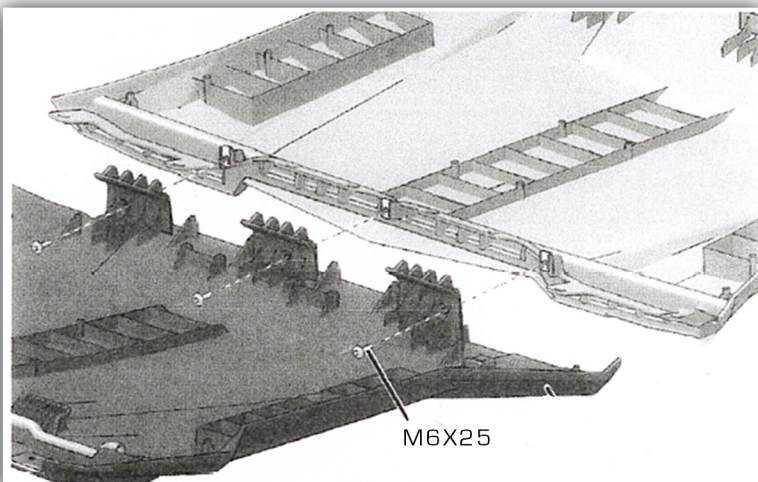
PEEL THE ADHESIVE FROM THE SEAL AND APPLY TO THE INSIDE OF THE CHANNEL ON THE REAR ROOF PANEL.



INSTALL THE THREE M6 THREADED CLIPS TO THE STANDOFFS ON THE UNDERSIDE OF THE REAR ROOF TOWARDS THE FRONT OF THE PANEL (1) AND TWO TOWARDS THE BACK OF THE PANEL.(2)



NOW COMBINE THE TWO PANELS USING THREE M6X25 SCREWS AND THEN EIGHT 14X3/4 SCREWS. BE CAREFUL TO NOT OVER TIGHTEN.



STEP 2 ROOF INSTALLATION

SET THE ROOF IN PLACE ON THE FRAME AT THIS TIME.

LOWER AND THEN SLIDE THE TWO FRONT HOOKS INTO THE SLOTS ON THE FRAME. PRESS THE REAR OF THE ROOF DOWN UNTIL THE THREE HOOKS LOCK OVER THE REAR CROSS - MEMBER OF THE FRAME. SECURE THE REAR CORNERS USING THE TWO REMAINING M6 SCREWS (3) AND THE PROVIDED CLAMP. (4)

