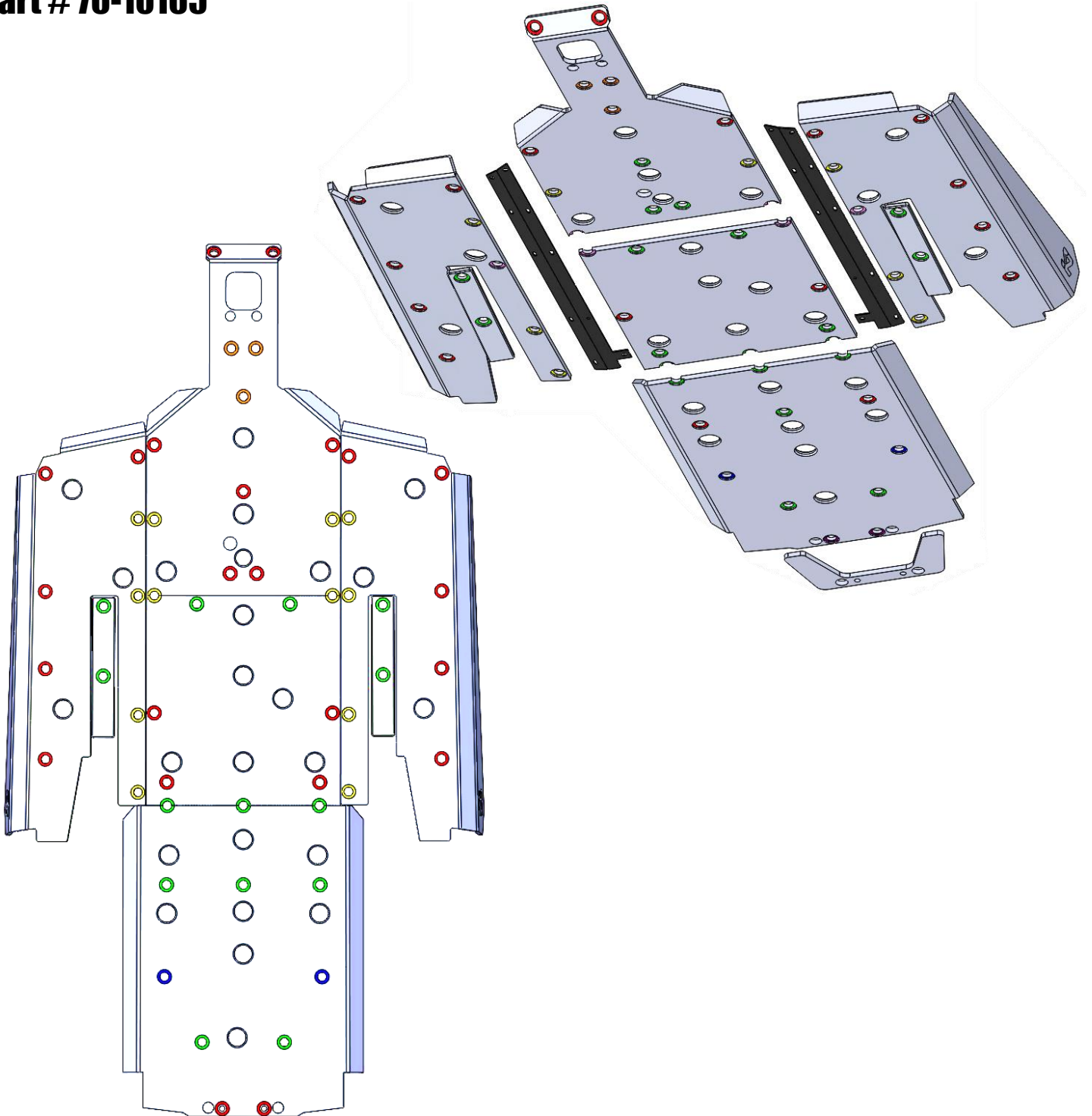


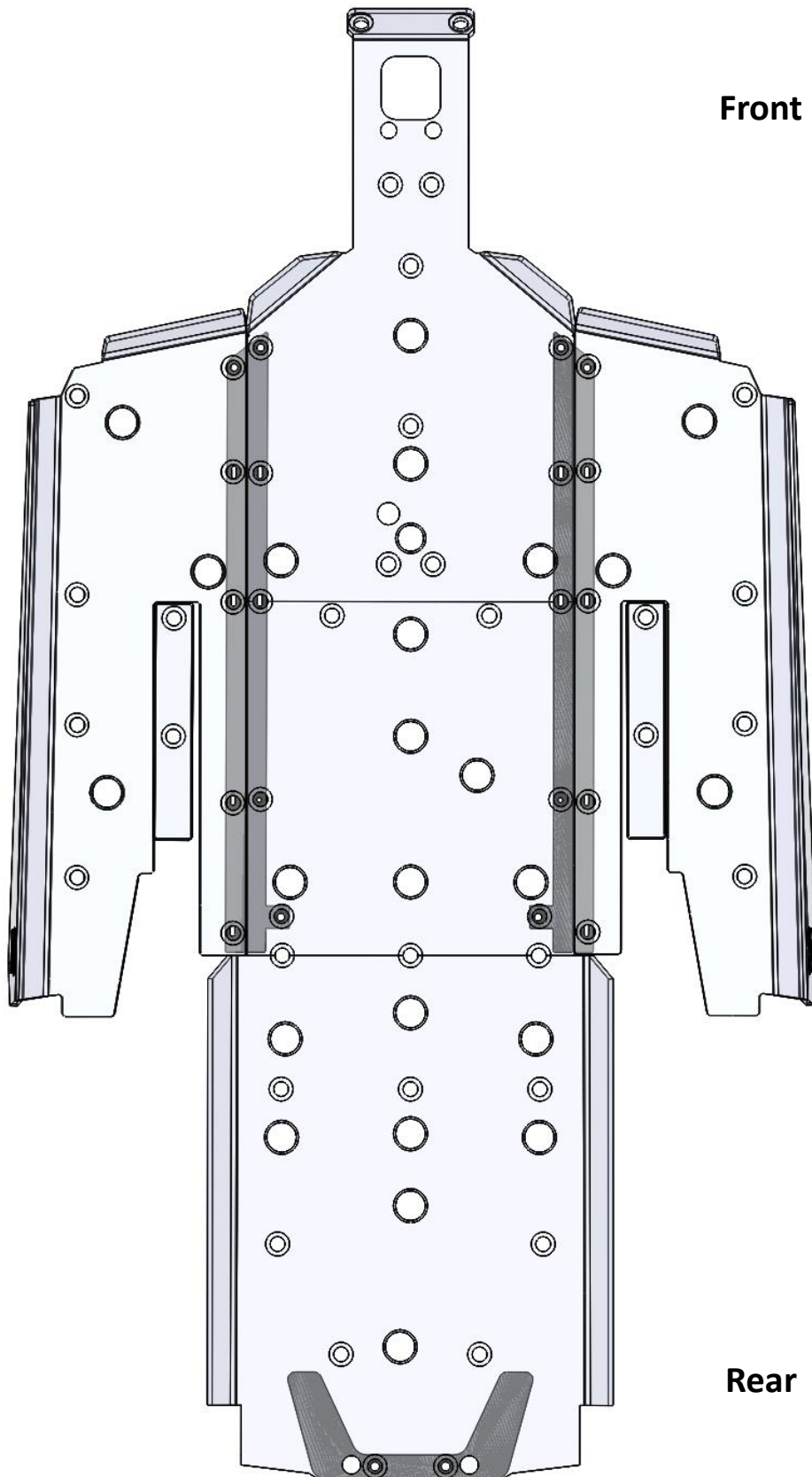
**RZR XP 1000 2 Seat Seizmik
Skid Plate Manual
Part # 76-10165**



Always observe the warnings and precautions in this manual when using your Seizmik products. For best results, carefully follow the instructions in this manual and make no modifications.

If you have any questions, comments, need assistance, or are missing parts, please call 1-866-838-3366 between 9:00AM and 5:00PM EST. You can email us at support@seizmik.com

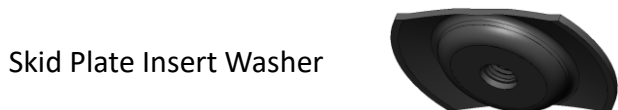
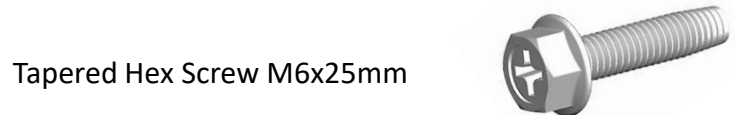
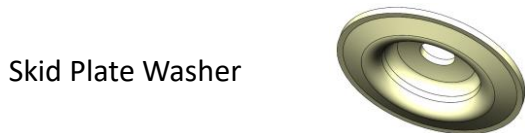
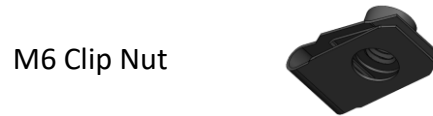
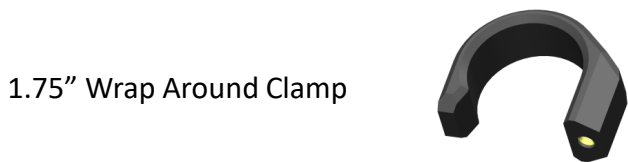
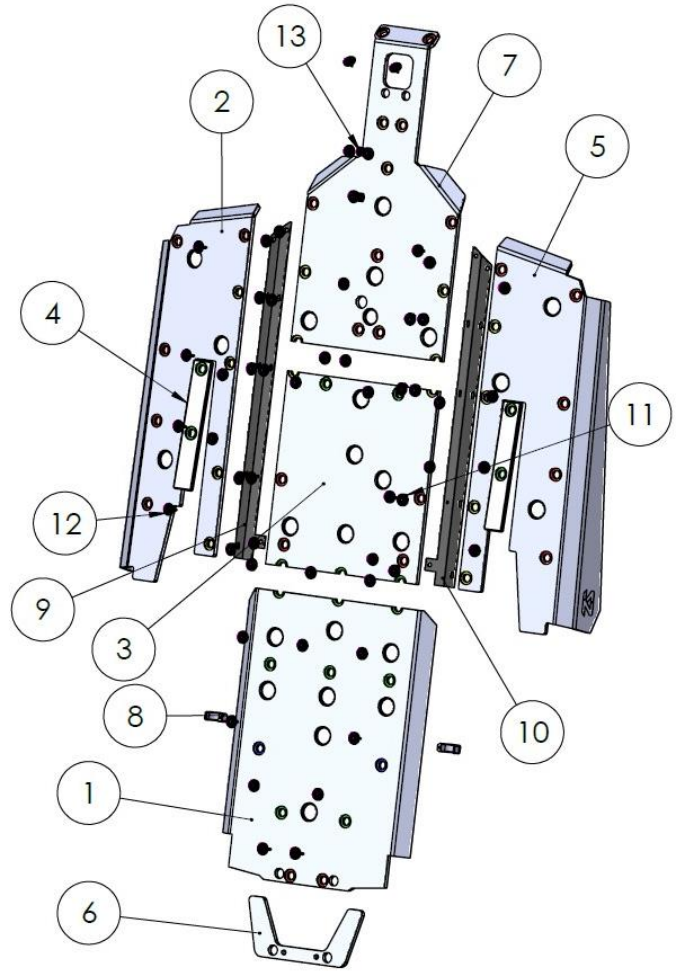
View looking up at the underside of the vehicle



Parts List

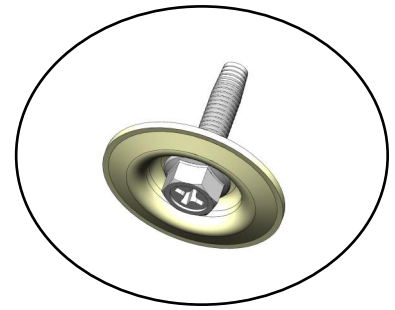


| ITEM NO. | DESCRIPTION | Part # | QTY. |
|----------|-----------------------------------|----------|------|
| 1 | SP_SK02_P6_02 Rear Panel | 76-10212 | 1 |
| 2 | SP_SK02_P4_05 Pass Side Panel | 76-10210 | 1 |
| 3 | SP_SK02_P2_01 Middle Panel | 76-10208 | 1 |
| 4 | SP_SK02_P5_01 Trailing Arm Panel | 76-10211 | 2 |
| 5 | SP_SK02_P3_05 Driv Side Panel | 76-10209 | 1 |
| 6 | SP_SK02_X1_01 Spacer | 76-10215 | 1 |
| 7 | SP_SK02_P1_02 Front Panel | 76-10207 | 1 |
| 8 | 1.75" Wrap Around Clamp | 54-96003 | 2 |
| 9 | SP_SK02_B1_02 Pass Side Bracket | 76-10213 | 1 |
| 10 | SP_SK02_B2_02 Driv Side Bracket | 76-10214 | 1 |
| 11 | M6 Clip Nut | 54-96009 | 12 |
| 12 | Skid Plate Washer | 54-96007 | 54 |
| 13 | Insert Washer | 54-96008 | 3 |
| 14 | M6 x 25mm Tapered Screw | 54-96017 | 17 |
| 15 | Hex flange screw, M6 x 1.0 x 16mm | 99-10001 | 12 |
| 16 | Hex flange screw, M6 x 1.0 x 35mm | 99-10006 | 2 |
| 17 | Self Tapping Screw m6.3 x 25mm | 54-96014 | 7 |
| 18 | Self Tapping Screw m6.3 x 50mm | 54-96016 | 2 |
| 19 | Self Tapping Screw m6.3 x 38mm | 54-96015 | 14 |

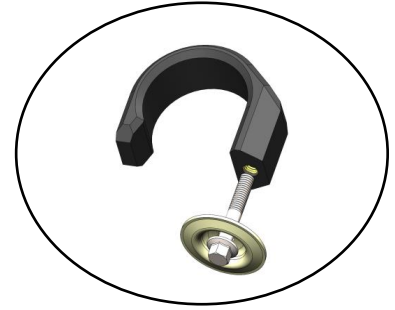




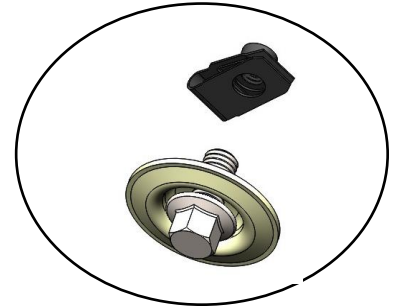
GREEN holes use M6x25mm tapered bolt and washer into factory threaded holes



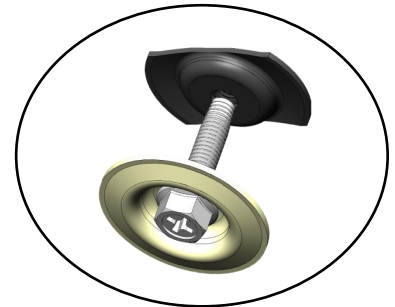
BLUE holes use M6x35mm with wrap around clamp



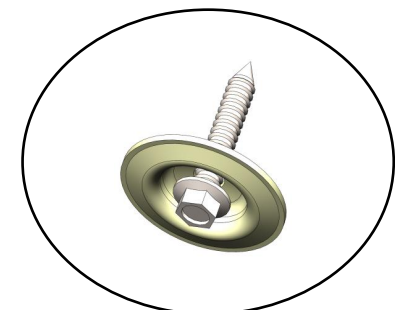
YELLOW holes use M6x16mm bolt and washer into clip nuts attached to metal brackets.

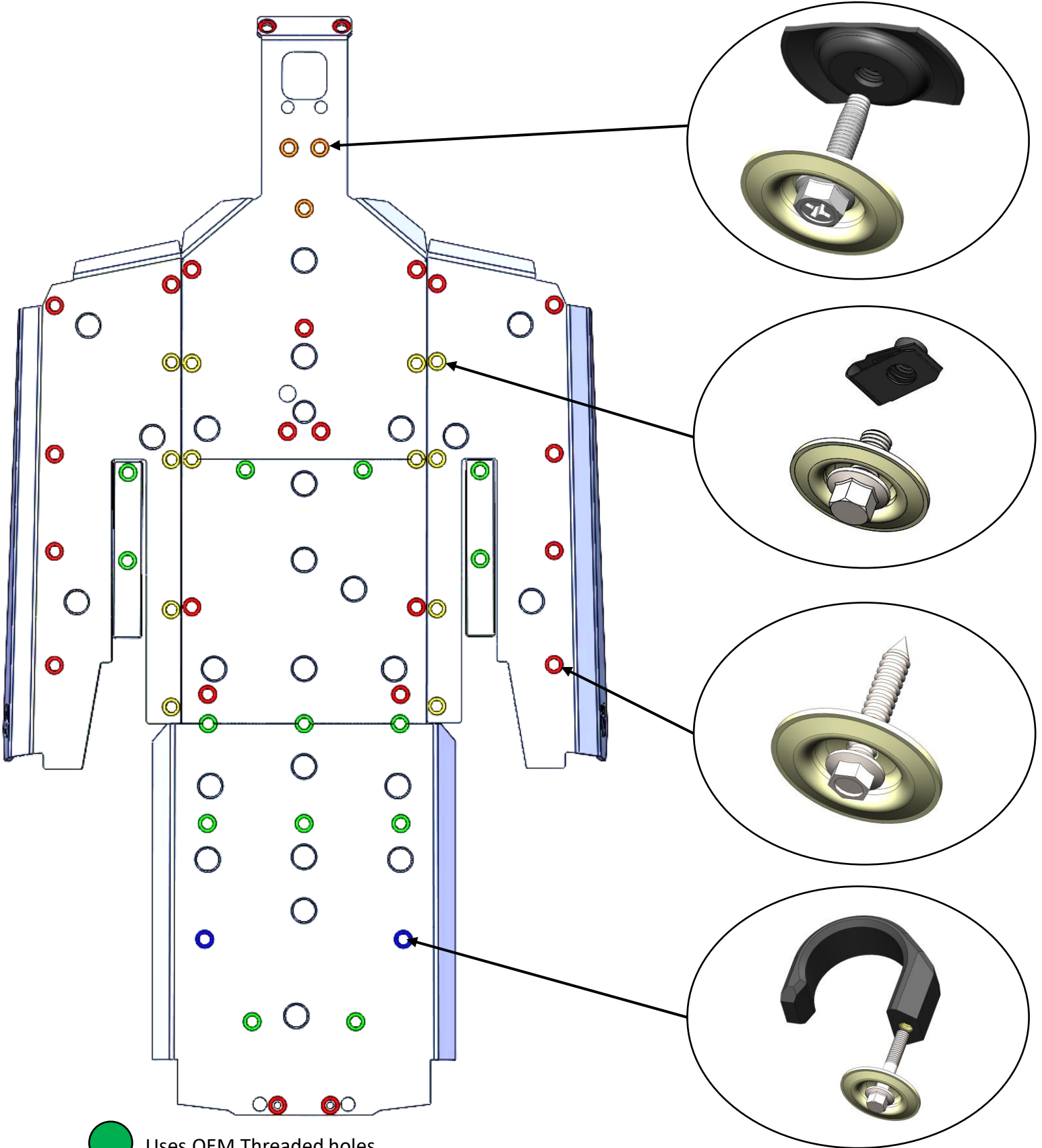


ORANGE holes use M6x25mm tapered bolt and insert washer placed into factory hole in sheet metal

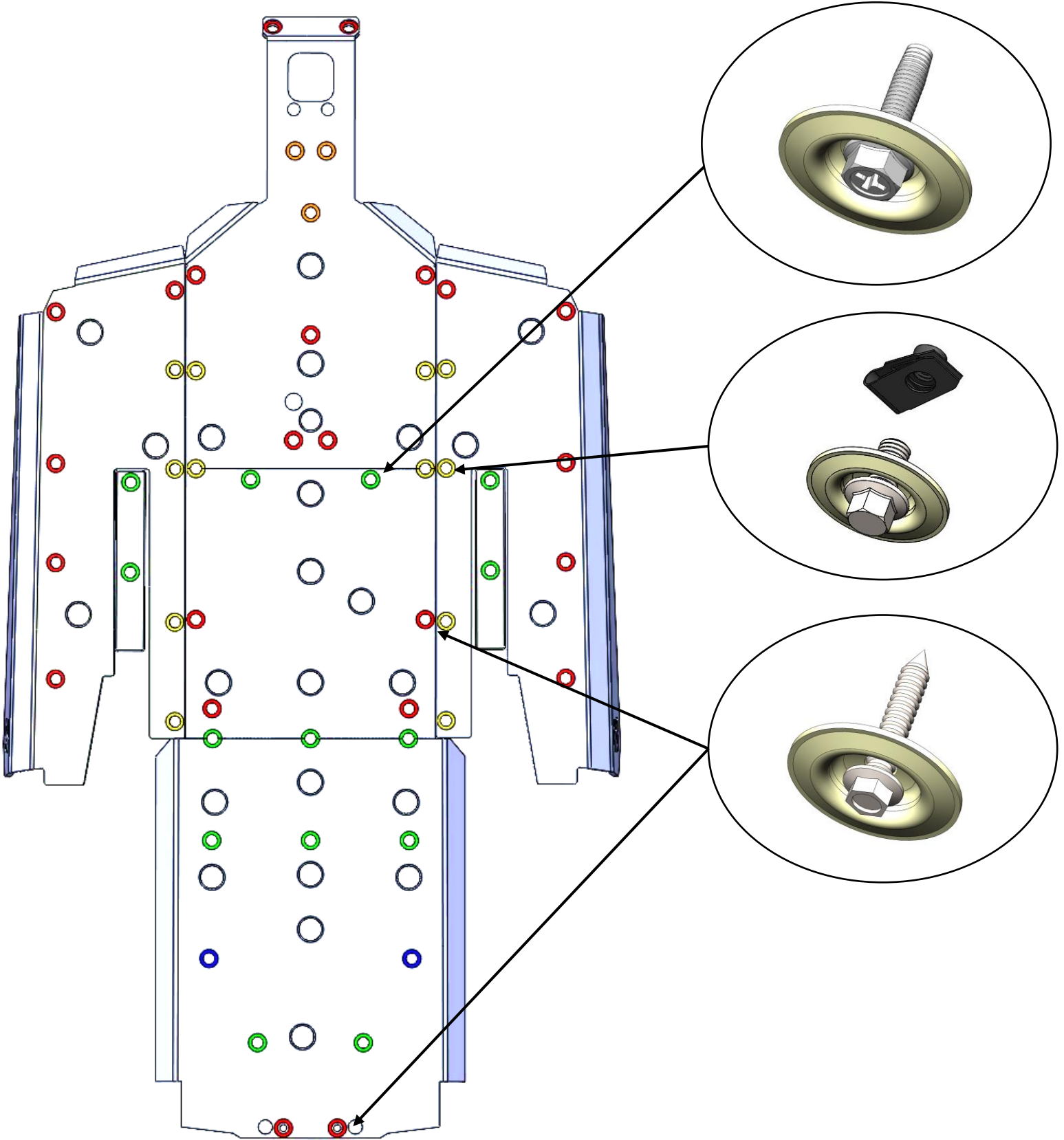


RED holes use Self Tapping Screws- Some locations may or may not require pre-drilling of 1/8" pilot hole.

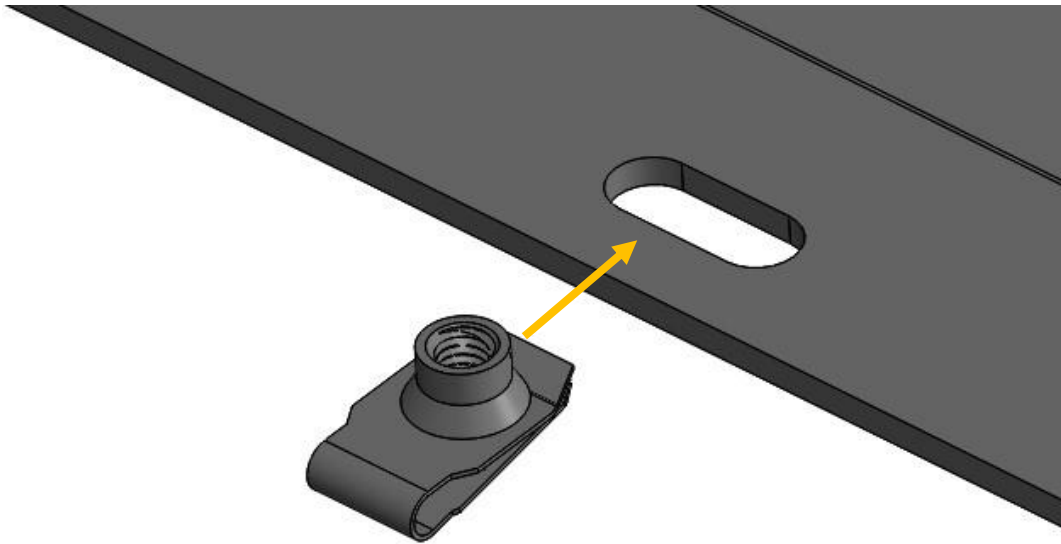




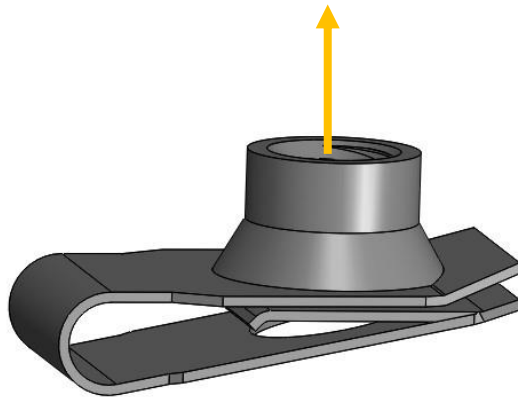
- Uses OEM Threaded holes
- Uses Clamps
- 16mm bolt threads into brackets with clip nuts
- Uses insert washer into sheet metal hole
- Self Tapping Screws-May or may not require predrilling of 1/8" pilot hole.



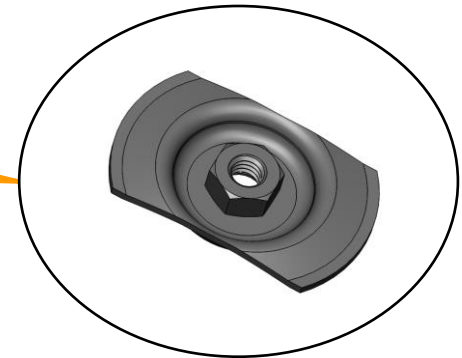
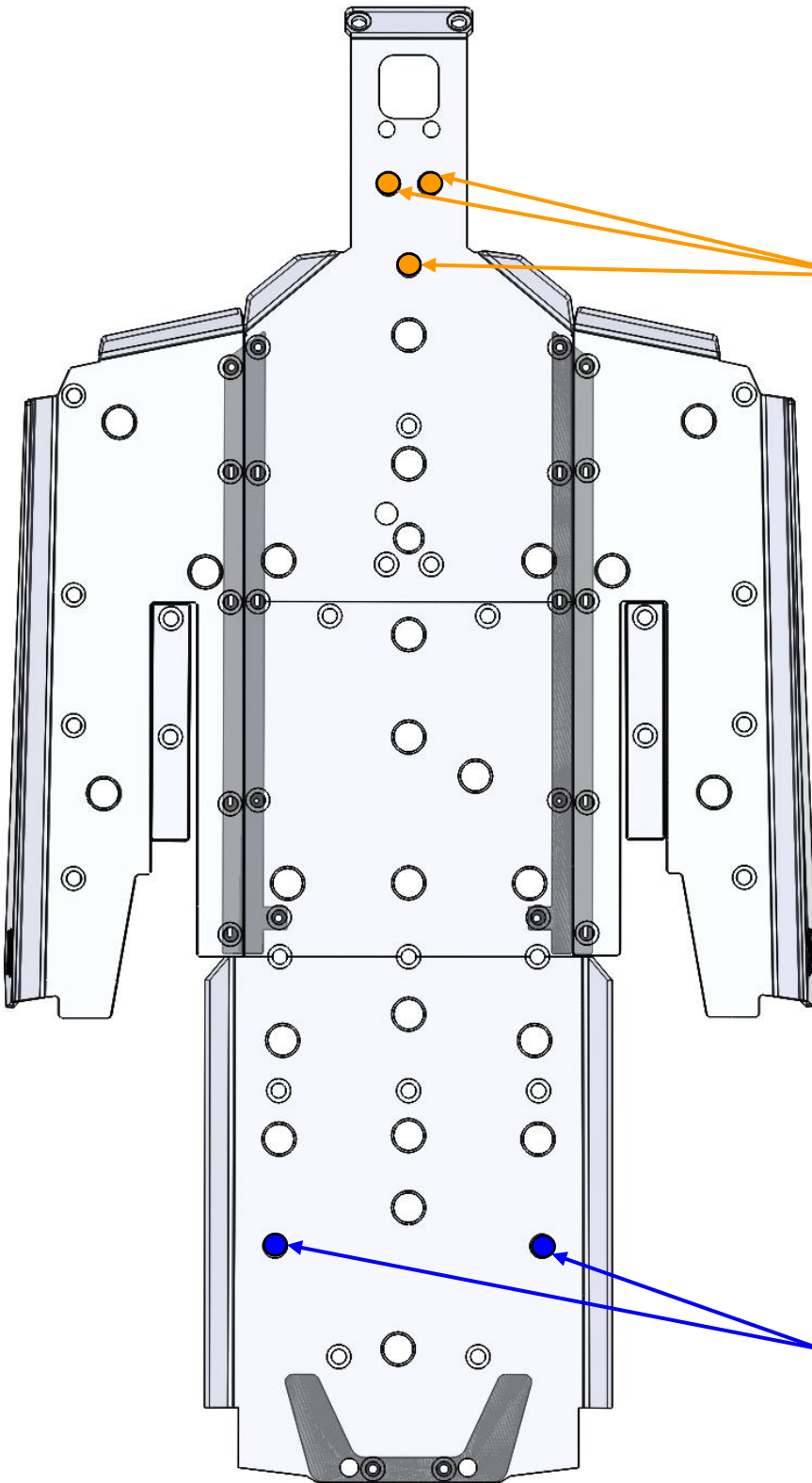
- Uses OEM Threaded holes
- Uses Clamps
- 16mm bolt threads into brackets with clip nuts
- Uses insert washer into sheet metal hole
- Self Tapping Screws-May or may not require predrilling of 1/8" pilot hole.



Attach all clip nuts on to slotted holes in metal brackets.



Threading should face upwards, toward vehicle

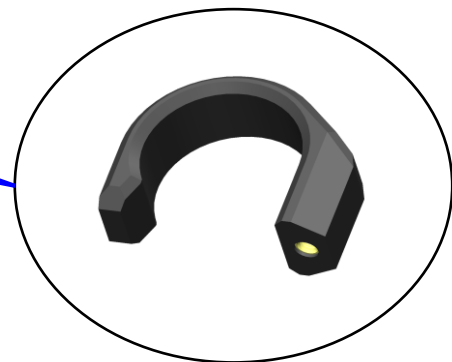


Insert Washer

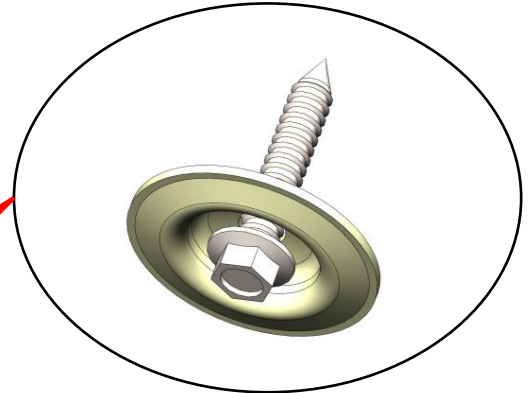
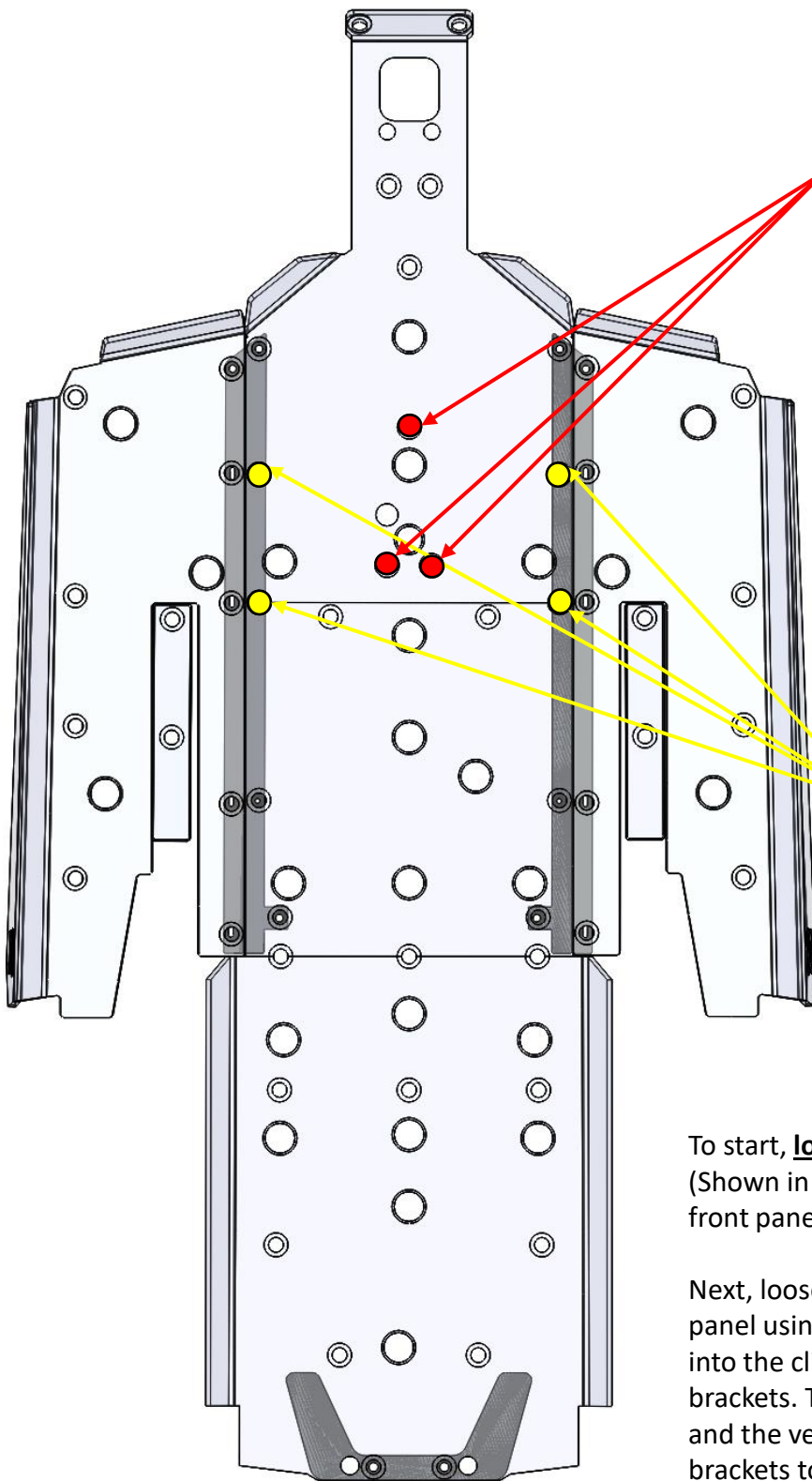
To start, remove stock skid plate.

Then, place insert washers (Shown in ORANGE) into holes in Sheetmetal. Side shown faces upwards, toward vehicle.

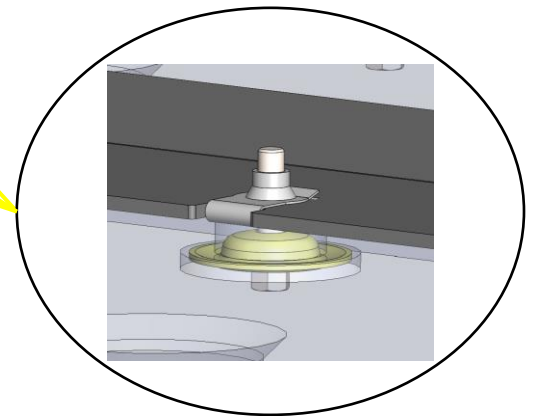
Snap clamps (Shown in BLUE) around metal tubing in general location shown. Threading should face **inward**.



1.75" Wrap Around Clamp



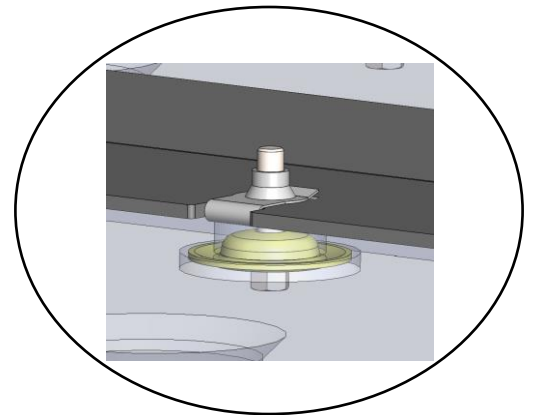
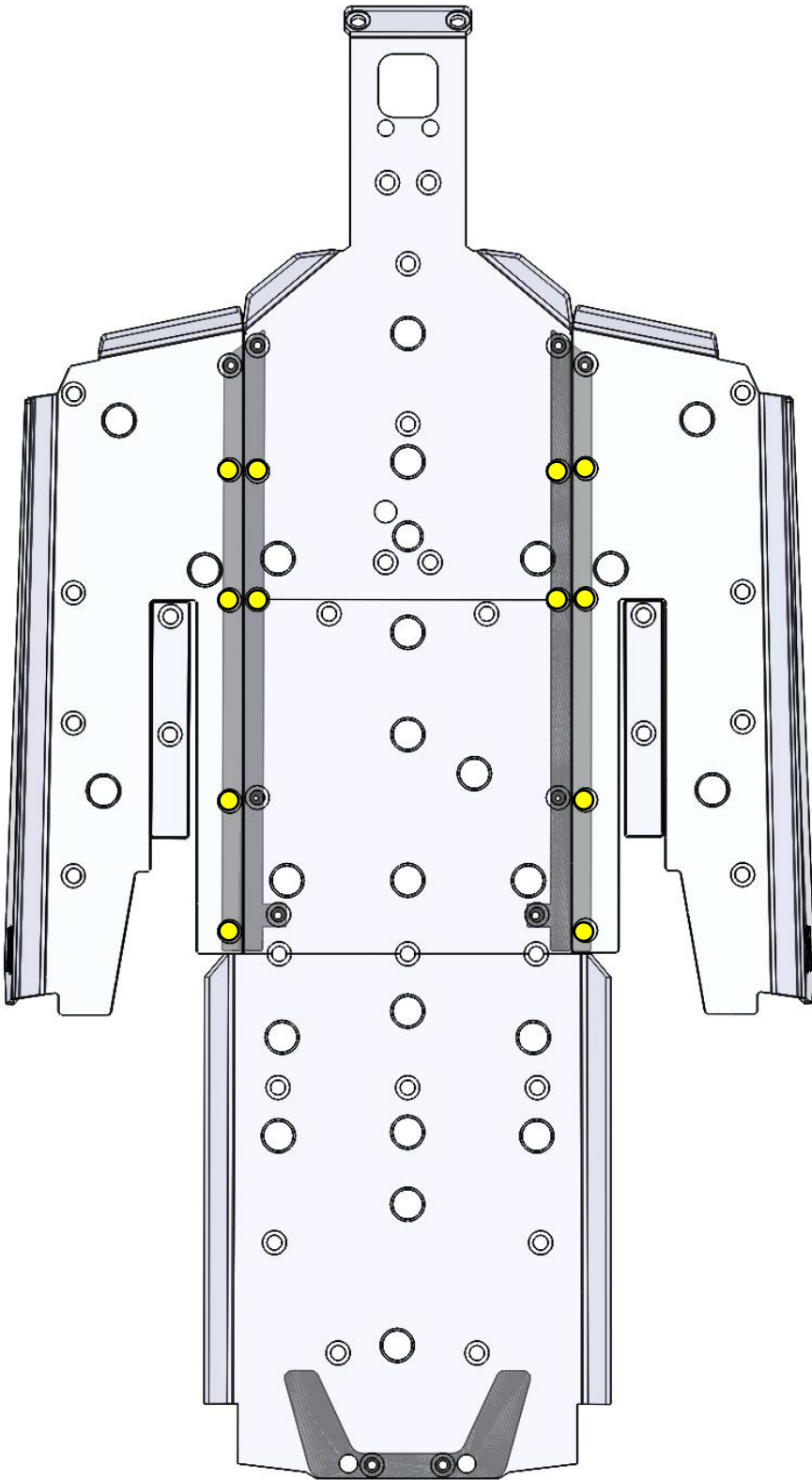
25mm Self Tapping Screw



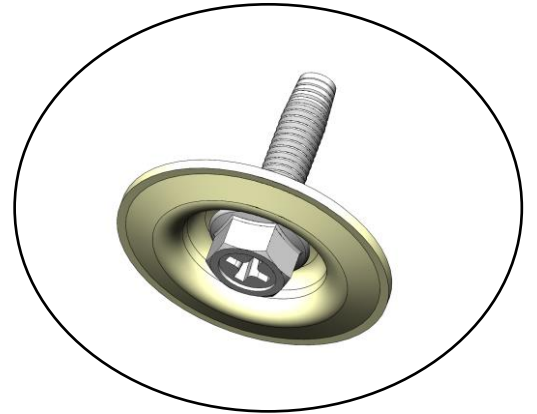
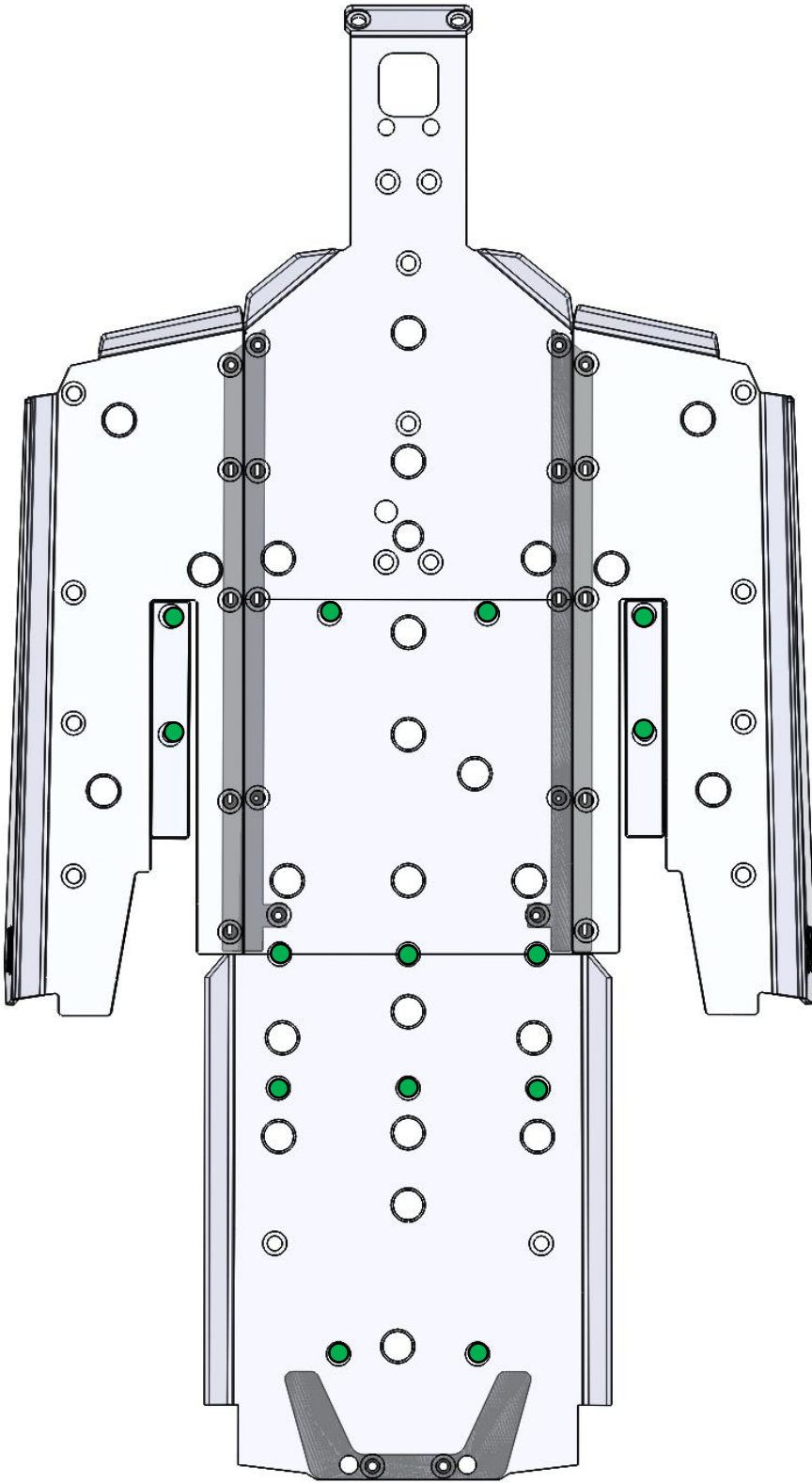
M6x16mm Bolt threads into Clip Nut

To start, **loosely** install the center 3 bolts and washers (Shown in RED) into pre-existing holes so that the front panel is held in place on its own.

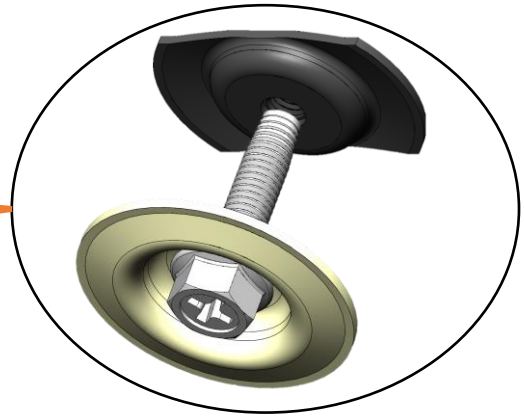
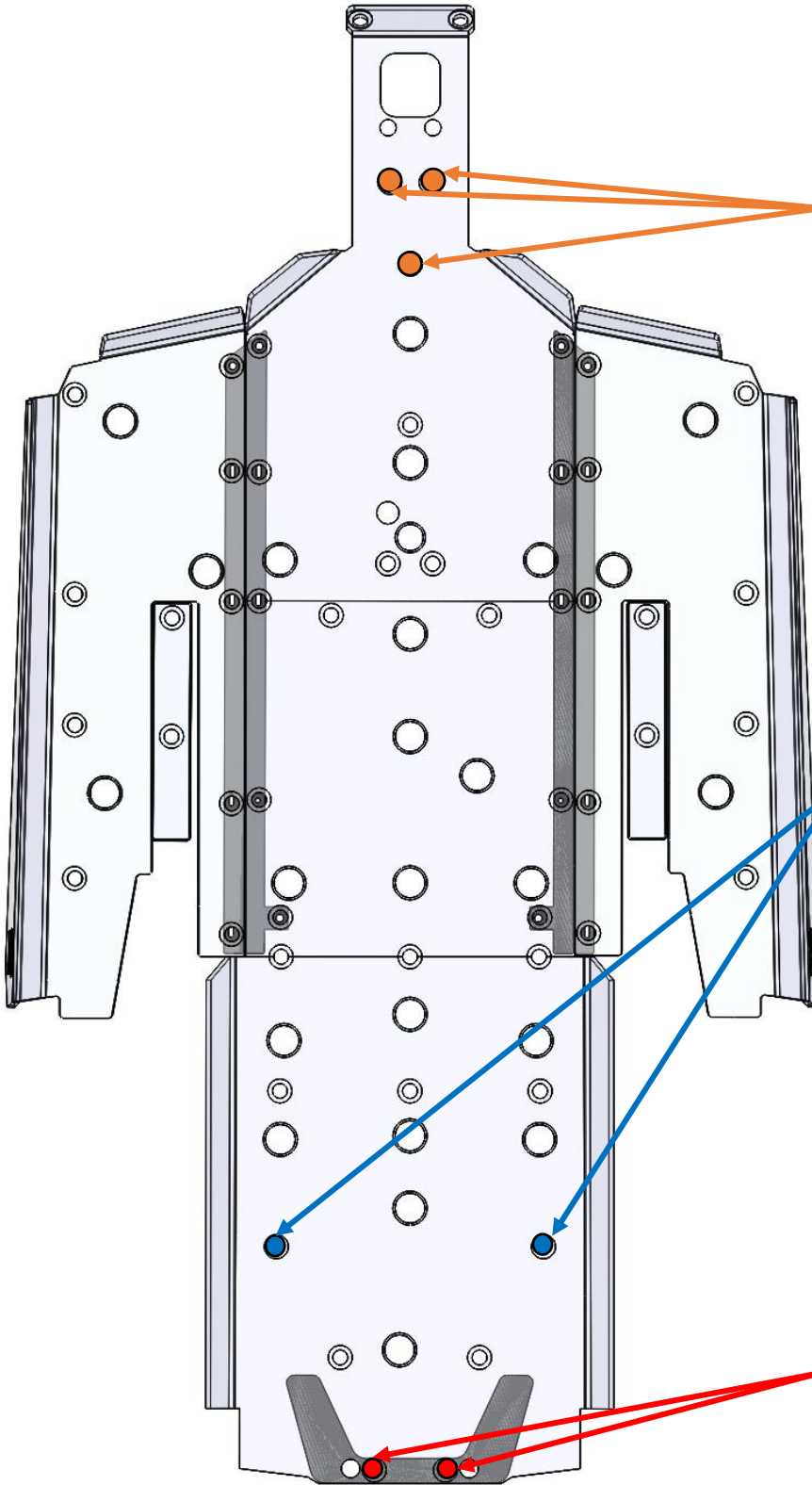
Next, loosely attach the metal brackets to the front panel using 4 bolts and washers (Shown in YELLOW) into the clip nuts that you attached to the metal brackets. The metal brackets go between the panels and the vehicle frame. The panels will sandwich the brackets to the underside of the vehicle frame.



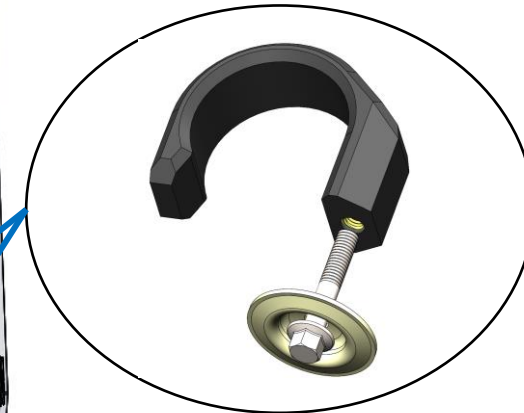
M6x16mm Bolt



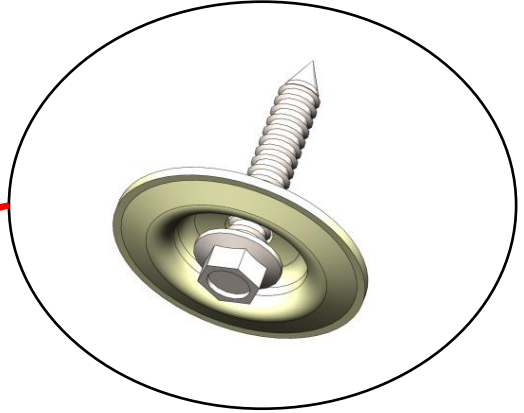
M6x25mm Tapered Bolt



M6x25mm Tapered Bolt and Insert Washer

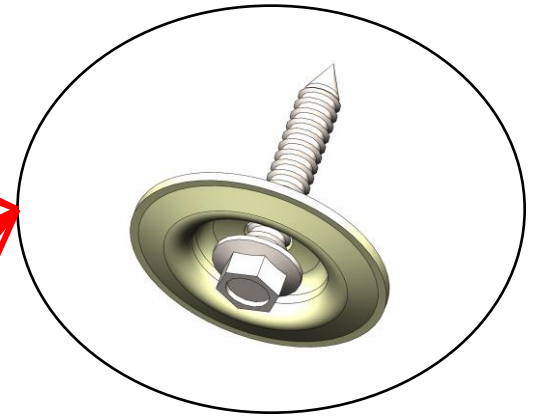
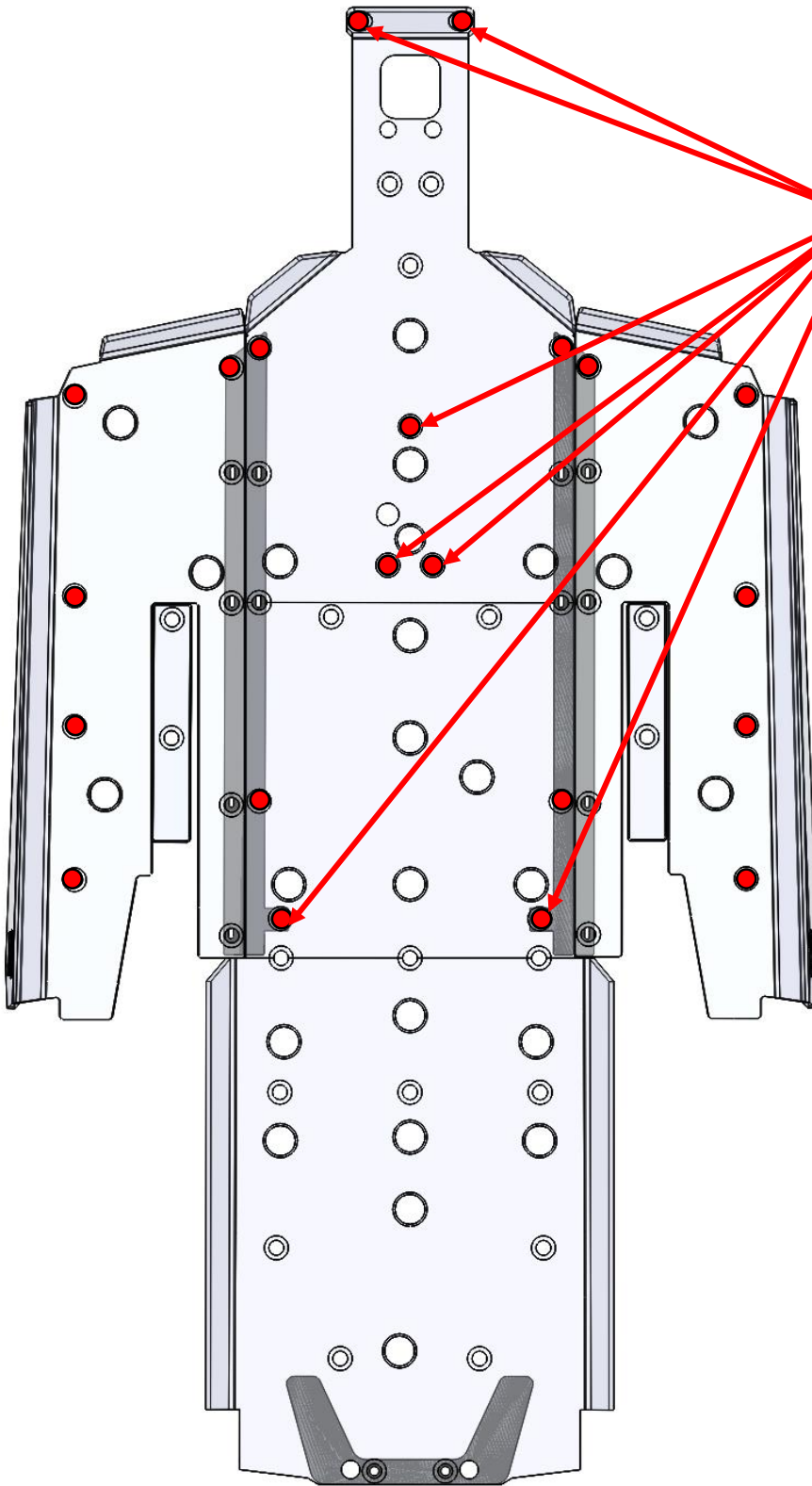


1.75" Wrap Around Clamp
M6x35mm Bolt

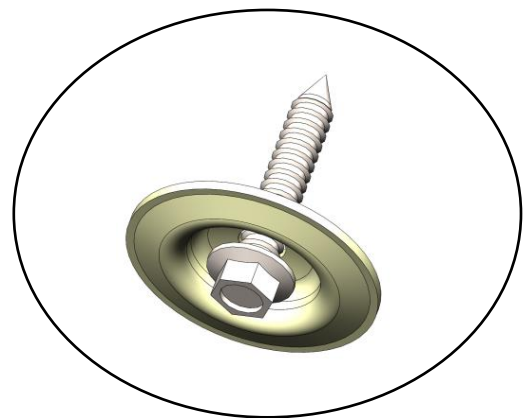


50mm Self Tapping Screw

NOTE: Spacer goes between vehicle and rear panel



25mm Self Tapping Screw



38mm Self Tapping Screw